

This is an electronic reprint of the original article. This reprint may differ from the original in pagination and typographic detail.

Analysis of cellulose nanocrystals (CNCs) with flow cytometry

Strand, Anders; Vähäsalo, Lari; Retulainen, Elias; Sundberg, Anna

Published in:
Cellulose

DOI:
[10.1007/s10570-018-2141-4](https://doi.org/10.1007/s10570-018-2141-4)

Published: 01/01/2019

[Link to publication](#)

Please cite the original version:

Strand, A., Vähäsalo, L., Retulainen, E., & Sundberg, A. (2019). Analysis of cellulose nanocrystals (CNCs) with flow cytometry. *Cellulose*, 26(2), 959–970. <https://doi.org/10.1007/s10570-018-2141-4>

General rights

Copyright and moral rights for the publications made accessible in the public portal are retained by the authors and/or other copyright owners and it is a condition of accessing publications that users recognise and abide by the legal requirements associated with these rights.

Take down policy

If you believe that this document breaches copyright please contact us providing details, and we will remove access to the work immediately and investigate your claim.

Analysis of cellulose nanocrystals (CNCs) with flow cytometry

Anders Strand  · Lari Vähäsalo · Elias Retulainen · Anna Sundberg

Received: 5 July 2018 / Accepted: 14 November 2018
© The Author(s) 2018

Abstract Cellulose nanocrystals (CNCs) were prepared from kraft pulps of eucalyptus, birch, and softwood. The different kraft pulps were hydrolyzed using strong sulfuric acid in order to obtain colloiddally stable CNCs. The CNCs were studied using flow cytometry (FCM). The light scattering properties of the CNCs in side direction and forward direction were documented. The use of a selective staining agent in combination with FCM analysis enabled detection of the hydrophobic particle populations within the CNC suspensions. The hydrophobic particles were seen clearly in the CNCs from the eucalyptus and birch kraft pulps, but not in the CNCs from softwood pulp.

These particles were shown to be linked with the content of lipophilic extractives, especially sterols, present in the kraft pulps. From this fact, it was concluded that FCM analyses offer useful information about the properties of CNCs in suspension. It was also concluded that the content of lipophilic extractives in different raw materials should be determined and considered prior to CNC production. Pre-extraction steps might be needed in order to produce high-quality CNCs from various raw materials, even from kraft pulps.

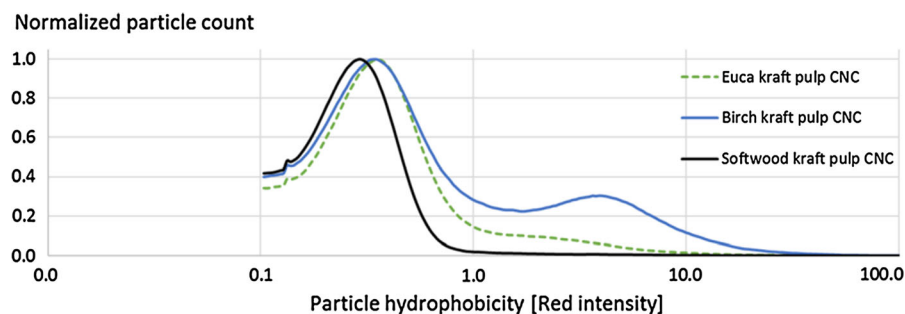
A. Strand (✉) · A. Sundberg
The Laboratory of Wood and Paper Chemistry, Åbo
Akademi University, Porthaninkatu 3, 20500 Turku,
Finland
e-mail: anders.strand@abo.fi

A. Sundberg
e-mail: anna.sundberg@abo.fi

L. Vähäsalo
CH Bioforce, Raisionkaari 55, 21200 Raisio, Finland
e-mail: lari.vahasalo@abo.fi

E. Retulainen
VTT Technical Research Centre of Finland Ltd,
Koivurannantie 1, 40400 Jyväskylä, Finland
e-mail: elias.retulainen@vtt.fi

Graphical abstract



Keywords Cellulose · CNC · Flow cytometry · Light scattering · Colloids · Hydrophobicity · Lipophilic extractives

Introduction

Cellulose nanocrystals (CNCs) have received a lot of attention in research due to their physical and chemical properties, renewability, sustainability, and usefulness in composite materials (Favier et al. 1995a, b; Ruiz et al. 2000; Habibi et al. 2010; Wang et al. 2012). CNCs are a strong contender for various future applications in composite materials, due to their low cost and abundancy. CNCs are produced by acid hydrolysis of the amorphous and para crystalline regions of cellulose fibers, while the crystalline regions are left intact as rod-like particles (Marchessault et al. 1961; Habibi et al. 2010). The crystallites of CNCs are, therefore, similar to the crystallites of the cellulose fiber raw materials. A wide array of different raw materials have been tested for CNC production and specific hydrolysis and separation protocols have been established for each of these (Beck-Candanedo et al. 2005; Habibi et al. 2010). The cellulose raw material is normally hydrolyzed by addition of strong acid, in combination with controlled reaction conditions, i.e. temperature, agitation, and time (Revol et al. 1994; Dong et al. 1998; Wang et al. 2014).

The length of the cellulose crystals after hydrolysis depends on the leveling-off degree of polymerization (LODP) of the starting material. It has been reported that milder hydrolysis conditions will eventually reach the LODP of the starting material with lower losses of material, but that the reaction times need to be severely

prolonged (Battista 1950; Håkansson and Ahlgren 2005). The LODP for bleached wood pulp has been reported as 140–200 units (Dong et al. 1998; Habibi et al. 2010). The surface charge of the CNCs will be very different depending on the choice of acid; sulfuric acid introduces sulfate half ester groups to the CNC, while e.g. hydrochloric acid does not (Araki et al. 1999; Beck-Candanedo et al. 2005). The introduction of the anionically charged groups on the surface of the CNCs will greatly increase its colloidal stability and even prevent sedimentation. It was reported that initial hydrolysis of the cellulose raw material by hydrochloric acid can be followed up by a separate sulfuric acid treatment to introduce sulfate half ester groups on the cellulose microcrystals (CMCs), and fine-tune the viscosity properties of the suspension (Araki et al. 1999).

CNC particles and suspensions have previously been characterized with a wide array of analytical methods, such as transmission electron microscopy (TEM), atomic force microscopy (AFM), photon correlation spectroscopy (PCS), x-ray diffraction (XRD), conductometric titration, elemental analysis, viscosity measurements, sedimentation measurements (Marchessault et al. 1961; Dong et al. 1998; Beck-Candanedo et al. 2005; Håkansson and Ahlgren 2005; Hirai et al. 2009; Chen et al. 2015). However, additional analysis techniques may still provide useful information, relevant to the ever-growing CNC community.

Flow cytometry (FCM) is a relatively new technique in the field of pulping and papermaking. The technique was adapted from medical science, where it is used mainly for the counting of cells (Shapiro 2003). FCM measures the light scattering intensity of particles in suspension in forward and side direction.

Furthermore, FCM can be used to measure the fluorescence of particles at different wavelengths, which is very useful when combined with addition of selective dyes to the samples. In the field of pulping and papermaking, FCM has so far been used to analyze colloidal wood pitch, bacteria, coated broke, precipitated oxalate, various filler particles, and polyelectrolyte complexes (Vähäsalo et al. 2003; Lindberg et al. 2004; Vähäsalo and Holmbom 2005; Strand et al. 2013; Häärä et al. 2014; Strand et al. 2018). With FCM techniques, it is possible to analyze particles in suspension directly without complicated pre-treatments. The strengths of the FCM technique are short analysis times, as well as insight into the behavior and interactions of particle populations in aqueous suspensions.

The aim of this study was to obtain new insights about CNCs in suspension by FCM analyses. Raw materials that are available in large quantities worldwide, i.e. different kraft pulps, were chosen for this CNC study. An additional aim was to determine if eucalyptus, birch, or softwood kraft pulp was most suited for continued CNC production.

Materials and methods

Materials

ECF-bleached, once-dried softwood kraft pulp was obtained from a Finnish pulp mill. The softwood kraft pulp was prepared from a mixture of Nordic pine and spruce. ECF-bleached, once-dried birch kraft pulp was obtained from a Finnish pulp mill. ECF-bleached, once-dried eucalyptus kraft pulp was obtained from a pulp mill in Uruguay. Concentrated, analytical reagent grade sulfuric acid was obtained from Fisher Scientific UK. The H_2SO_4 was diluted with distilled water to 64 wt % and was allowed to cool down prior to use. Nile red was obtained from Tamro (Vantaa, Finland). The Nile red was directly dissolved in methanol to a concentration of 10 ppm. A commercially prepared and available cationic starch (Raisabond 15) was obtained from Chemigate, Finland as a pre-boiled slurry. Sodium carboxymethyl cellulose, M_w 250, degree of substitution 0.9, was obtained from Acros Organics. Polyelectrolyte complexes (PECs) were prepared from the cationic starch and CMCs at a polycation to polyanion ratio of 5.5:1 according to a

previously published procedure (Strand et al. 2018). The lipophilic extractives from thermomechanical pulp from Norway spruce were extracted with hexane. Colloidal wood pitch emulsions were prepared from the hexane extracts according to a previously published procedure (Sundberg et al. 1996b).

Methods

Analysis of carbohydrates

Analysis of carbohydrates in the dry kraft pulps was performed through methanolysis, silylation, and gas chromatographic analysis (GC) (Sundberg et al. 1996a). Resorcinol was added as internal standard for quantification. The analysis of sugar units was conducted with a long column GC (HP-1, 25 m \times 0.20 mm) with split injection, equipped with a flame ionization detector (FID). The methodology gave information mainly about the amount of non-crystalline carbohydrates in the fiber samples. The determined sugar unit contents of the different kraft pulps are presented in Table 1.

Preparation of cellulose nanocrystals (CNCs)

CNCs were prepared according to previously published methodology, with some modifications, and the concentration of acid during hydrolysis was chosen accordingly (Revol et al. 1994; Dong et al. 1998; Beck-Candanedo et al. 2005). Grinding of the different kraft pulps was performed with a laboratory-sized mill (IKA MF 10). The kraft pulp powders were freeze-dried for a few days. 5 o.d. g of the freeze-dried pulp was weighed into a glass bottle, and 250 mL of 64 wt % H_2SO_4 was added to the pulp. The pulp suspension was agitated by magnetic stirring for 30 min at room temperature in order to homogenize the mixture. The temperature of the suspension did not increase, since the pulp was completely dry when the H_2SO_4 was introduced. The glass bottle was sealed and placed in a 45 °C water bath for 25 min. The glass bottle was shaken manually continuously during this time, in order to further homogenize the mixture. The hydrolysis was stopped after 25 min by diluting the suspension 10 \times with distilled water.

Secondary aggregation of particles took place slowly in the diluted suspension. The suspension was allowed to sediment over night at room temperature.

Table 1 The determined amount of different sugar units in the three different kraft pulps after acid methanolysis (uncertainty $\pm 5\%$)

Polysaccharide film	Eucalyptus kraft (mg/g)	Birch kraft (mg/g)	Softwood kraft (mg/g)
Arabinose	0.2	0.6	7.8
Galactose	5.1	3.0	8.3
Glucose	102.5	94.0	120.2
Mannose	1.2	8.2	47.2
Rhamnose	0.6	0.3	0.1
Xylose	135.1	173.9	68.6
Galacturonic acid	0.2	0.3	1.1
Glucuronic acid	0.8	0.8	0.5
4-O-Me-glucuronic acid	7.6	7.4	2.5
Sum	253.2	288.6	256.3

The diluted suspension was concentrated by centrifugation at 3400 g for 15 min. The supernatants were removed using a suction flask. The bottom phases were collected, diluted with distilled water, and again centrifuged at 3400 g for 30 min. The supernatants were again removed in order to concentrate the suspension. The collected cellulose fraction was diluted to 1 L with distilled water for washing. The suspension was again centrifuged at 3400 g for 30 min, and the supernatant was removed. The washing procedure was repeated one additional time. The collected cellulose fraction was dialyzed against distilled water for 4–5 days in a dialysis membrane with 12–14 kDa cut-off (Medicell International, UK). The dialysis water was replaced daily until the pH of the dialysis water remained unchanged over the course of 1 day.

After dialysis, the CNC suspension was homogenized at 20,000 rpm using a Polytron PT3000 (GWB) for 5 min, and with ultrasonic impulses for 2×10 min. The CNC suspension was allowed to sediment, in order let large residual fiber fragments sink to the bottom of the flask. Only the non-sedimenting particles in the supernatant was used for further analyses.

Flow cytometry (FCM)

Flow cytometry (FCM) was used to analyze the CNC suspensions, using a Partec CyFlow Blue apparatus, equipped with a blue Argon laser (488 nm). The light scattered by the particles were recorded in forward direction (FSC) and side direction (SSC, 90°). The apparatus was also equipped with three different fluorescence channels, which recorded the scattering

intensity in the green (512–542 nm), orange (575–605 nm), and red (615–645 nm) spectra. Filtered distilled water was used as sheath fluid in the analyses. Nile red (Tamro, Vantaa, Finland) was used as a fluorescent dye to stain the particles prior to FCM analysis, as in previously published studies (Vähäsalo et al. 2003; Vähäsalo and Holmbom 2005; Strand et al. 2013, 2018). Nile red is an environment-sensitive fluorophore that exhibits a blue-shift proportional to the hydrophobicity of its environment (Greenspan and Fowler 1985). It was expected that the added nile red mainly stained the surface of the CNCs, since the solubility of nile red in water is negligible.

The CNC suspensions were diluted $4 \times$ or $15 \times$ with filtered distilled water prior to FCM analysis, depending on the concentration of detectable particles in the sample. 20 μ L of methanol solution of nile red (10 ppm) was added to stain the CNCs, and the fluorescence intensity in the red spectrum was used as an indicator of particle hydrophobicity. FCM analysis was used to count the number of particles in the sample, and group the particles together as populations based on their recorded light scattering properties. Particle populations were gated using Partec FloMax software, in order to calculate the average scattering of particles in side and forward directions, as well as particle hydrophobicity (Vähäsalo et al. 2003).

Analysis of extractives

Grinding of the different kraft pulps was performed with a laboratory-sized mill (IKA MF 10). The kraft pulp powders were freeze-dried for a few days. Roughly 4 o.d. g of the different kraft pulp powders were packed into stainless steel extraction cells

equipped with glass microfiber filters. Extractions were performed with a Dionex Corp. accelerated solvent extractor (ASE200) using a mixture of acetone:water:acetic acid (94:5:1 v/v). The samples were extracted consecutively three times for 5 min, at 100 °C and 13.8 MPa, and the extract from each extraction cycle was combined into one. The total volume of the extract was adjusted to exactly 50 mL at room temperature.

The concentration of extractives was determined by gas chromatography using both long and short column techniques (Örså and Holmbom 1994). Exactly 10 mL of the extracts were pipetted into test tubes. Exactly 2 mL of internal standard, containing 0.02 mg/mL of heneicosanoic acid (21:0), betulinol or cholesterol, cholesteryl heptadecanoate (Ch17), and 1,3-dipalmitoyl-2-oleyl glycerol (triglyceride standard) in MTBE, was added to the samples. The samples were dried at 40 °C under a stream of nitrogen gas. The samples were dried to complete dryness in a vacuum oven (40 °C). The dry samples were silylated by addition of a 1:4:1 mixture of pyridine, N,O-bis(trimethylsilyl) trifluoroacetamide (BSTFA), and trimethylchlorosilane (TMCS). The silylation reaction took place in a 70 °C oven for 45 min.

Analysis of different groups of extractives was conducted on a short column with a PerkinElmer Clarus 500 GC. The column was a HP-1, 7 m × 0.53 mm, with film thickness of 0.15 mm. Hydrogen was used as carrier gas (see e.g. Strand et al. 2011). The injection volume was 0.5 µL, on-column, and the detector used was a flame ionization detector (FID).

Analysis of individual components was conducted on a long column with a PerkinElmer AutosystemXL GC. The used column was a HP-1, 25 m, 0.2 mm, with film thickness of 0.11 mm (see e.g. Strand et al. 2011). Hydrogen was used as carrier gas. The injection volume was 1 µL, split 24:1, and the detector used was an FID.

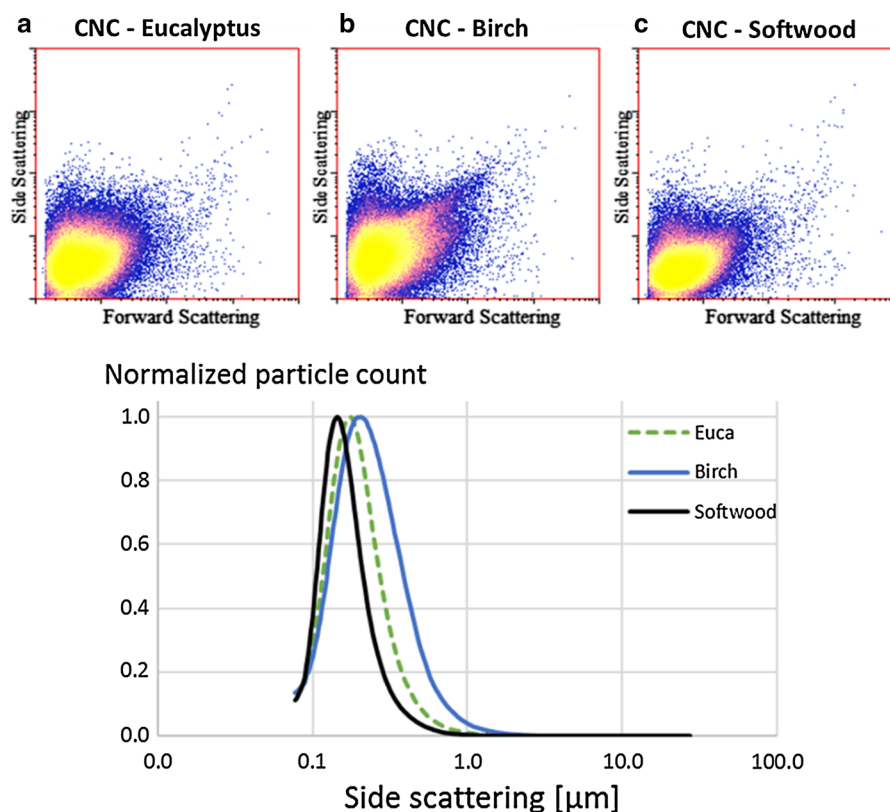
Results and discussion

Previously, the weight loss upon hydrolysis prior to level-off degree of polymerization (LODP) has been used to assess the amount of disordered material in pulps of different origins (Håkansson and Ahlgren 2005). Another method to determine the amount of

disordered material in the starting pulps was applied in this study, i.e. acid methanolysis. It is known that the acid methanolysis procedure cannot hydrolyze crystalline cellulose, and it is commonly used to analyze the hemicelluloses and pectins in various lignocellulosic materials (Sundberg et al. 1996a). By performing acid methanolysis on these three kraft pulps, it was possible to get an approximation of the amount of amorphous and para-crystalline carbohydrate regions in the raw materials. The dominating sugar units detected in eucalyptus and birch kraft pulp were xylose and glucose (Table 1). The dominating sugar units detected in the softwood kraft pulp were glucose, xylose and mannose. A large part of the glucose was thought to originate from amorphous cellulose regions. By performing acid methanolysis on the kraft pulps, the content of easily hydrolysable carbohydrates was determined as roughly 25–29% by weight depending on raw material.

The reaction conditions used in this study were not able to cleave all fiber residue into CNCs, and a significant fraction of partly hydrolyzed fiber fragments remained in the suspension. It has been reported that insufficient hydrolysis will result in larger particles with lower surface charge (Dong et al. 1998; Beck-Candanedo et al. 2005). This type of large particles have previously been described as partially hydrolyzed cellulosic residue (Chen et al. 2015). The CNC suspensions were allowed to sediment prior to flow cytometry (FCM) analyses, in order to circumvent the presence of large particles. Only the non-sedimenting particles in the supernatants were used as representative CNC samples for the different kraft pulps. Flow cytometry of the CNCs prepared from the three different kraft pulps revealed clear particle populations (Fig. 1). The forward scattering (FSC) intensities of the CNCs were plotted against their side scattering (SSC) as logarithmic density plots. The graphs revealed single particle population for all of the three different CNCs as a function of their light-scattering ability. The shapes of the CNC populations were slightly different depending on the raw material used, which indicated that the choice of raw material influenced the resulting CNCs. Previously, FCM measurements of polyelectrolyte complexes (PECs) highlighted that the FSC and SSC offers quite different information about particles in suspension (Strand et al. 2018). It was theorized that the SSC gives information about the amount of dense and light scattering surfaces

Fig. 1 a–c Logarithmic density plots of light scattering in the forward direction (FSC) versus the light scattering in the side direction (SSC) of CNCs made from the different kraft pulps. The size estimation (μm) of the particles from side scattering are also plotted as normalized curves



in a particle, while the FSC offers information about the transparency of a particle, as well as the complexity of its external or internal texture. However, both the SSC and FSC are connected to particle size. Information about the structural density of particles in suspension can be obtained by comparing the size estimation from FSC and SSC (Strand et al. 2018). The SSC of particles, in combination with calibration curves, has previously been shown to satisfactorily estimate the particle size of a wide array of particles in suspension (Vähäsalo et al. 2003). The average values

of the different particle populations were calculated and documented into Table 2.

The determined average SSC of the different CNCs showed that birch kraft pulp resulted in slightly larger particles than eucalyptus kraft pulp, and significantly larger particles than the softwood kraft pulp. It is known that different raw materials will result in CNCs of different dimensions, depending on the LODP of the cellulose raw material (Marchessault et al. 1961; Håkansson and Ahlgren 2005). It has previously been reported that treatment of black spruce kraft pulp with

Table 2 Determined and calculated properties of the three different CNCs by FCM analyses

CNC	Particle count (particles/ μL)	SSC (μm)	FSC (μm)	Hydrophobicity (red intensity)	Structural density (FSC/SSC)
Eucalyptus	2963	0.21	0.34	0.75	1.62
Birch	2616	0.27	0.40	1.91	1.48
Softwood	12,113	0.17	0.31	0.39	1.82

SSC particle size calculated from light scattering in side direction, FSC particle size calculated from light scattering in forward direction, FSC/SSC measure of the structural density of particles

65% H_2SO_4 gave CNCs with a length of 100–200 nm, and a width of about 5 nm (Revol et al. 1992, 1994). The measured side scattering of the particles by FCM are in the same size range as previously reported values of the lengths of CNCs made from cotton fibers (Dong et al. 1998). It has been reported that the length of CNCs from black spruce sulfite pulp and eucalyptus pulp were 147 nm and 141 nm respectively after treatment with 64% H_2SO_4 at 45 °C for 25 min (Beck-Candanedo et al. 2005). The average length of CNCs produced from eucalyptus kraft pulp has been reported as between 130 and 281 nm, depending on the conditions during hydrolysis with H_2SO_4 (Chen et al. 2015). It was reported that the length of CNCs produced from microcrystalline cellulose originating from Norway spruce was 200–400 nm, with a width of less than 10 nm (Bondeson et al. 2006). In the current study, the determined SSC values of the different CNCs ranged between 170 and 270 nm. This indicated that the size-estimation from SSC actually represented the length of the CNCs, while the width was far below the detection limit of the FCM apparatus. From the normalized side scattering-curves it was also seen that the size of the CNCs from the birch and eucalyptus kraft pulps resulted in slightly larger particles than the softwood CNCs.

The hydrophobicity of the CNCs were measured by FCM analyses with the added hydrophobic staining agent Nile red. A small volume of Nile red dissolved in methanol was added to the CNCs prior to injection into the FCM apparatus. Nile red is an environment-sensitive fluorophore that exhibits a blue-shift proportional to the hydrophobicity of its environment (Greenspan and Fowler 1985). The fluorescence intensity from Nile red in the red spectrum has previously been used to investigate the hydrophobicity of various particles in combination with FCM analysis (Vähäsalo et al. 2003; Vähäsalo and Holmbom 2005; Strand et al. 2013, Strand et al. 2018). The Nile red is believed to mainly adsorb onto the surfaces of the particles, since its solubility in water is negligible and migration into the CNCs is unlikely (Greenspan and Fowler 1985; Jose and Burgess 2006). The FSC intensities of the CNCs were plotted against their fluorescence intensity in the red spectrum (red) as logarithmic density plots (Fig. 2). Plotting FSC versus particle hydrophobicity revealed that the CNCs in fact consisted of two different particle populations, which was not detectable when only the light-scattering

properties were plotted (Fig. 1). The FCM measurements showed a dominating particle population with low hydrophobicity, and a smaller population of particles with higher hydrophobicity in the eucalyptus CNCs and in the birch CNCs (Fig. 2). However, only traces of the hydrophobic population were seen in the CNCs from softwood.

The fluorescent intensity in the red spectrum of the CNCs prepared from birch kraft pulp was compared with previously encountered particle populations in FCM. As an example of very hydrophilic particles, polyelectrolyte complexes (PECs) from a commercial cationic starch mixed with carboxymethyl cellulose was chosen (Fig. 3). It is known that these PECs are very hydrophilic particles, since they consist of hydrated polysaccharide chains locked in contact by the attraction of oppositely charged groups (Strand et al. 2018). Calculations showed that the average red fluorescence intensity of this PEC population was 0.35. As an example of very hydrophobic particles, colloidal wood pitch droplets in suspension was chosen (Fig. 3). It is known that these particles are hydrophobic, since they consist of lipophilic extractives dispersed in water. The colloidal wood pitch has been reported to consist of a core of triglycerides and steryl esters, with an outer shell of surface active resin and fatty acids (Qin et al. 2003). Calculations showed that the average red fluorescence intensity of the colloidal wood pitch population was 8.33.

When reexamining the two particle populations in the CNCs from birch kraft pulp alongside the PEC population and the colloidal wood pitch population, it is clearly visible that there are traces of these two populations within the CNC sample (Fig. 3). By gating the populations separately, it was possible to calculate the average red fluorescence intensity of the hydrophilic CNC population and the more hydrophobic population. The hydrophilic part of the birch kraft CNC had an average hydrophobicity value quite close to that of hydrated polysaccharide surfaces, i.e. 0.41. The hydrophobic part of the birch kraft CNC had an average hydrophobicity closer to the average hydrophobicity of colloidal wood pitch, i.e. 5.75. The hydrophilic part of the CNC was slightly more hydrophobic than clean hydrated polysaccharide surfaces of the polyelectrolyte complexes (Fig. 3a). The hydrophobic part of the CNC was less hydrophobic than colloidal wood pitch on its own (Fig. 3c). This indicated that the two populations were in fact a

Fig. 2 a–c Logarithmic density plots of fluorescence intensity in the red spectrum (red) versus the light scattering in the forward direction (FSC) of CNCs made from the different kraft pulps. The hydrophobicity estimation of the particles from their red intensity are also plotted as normalized curves

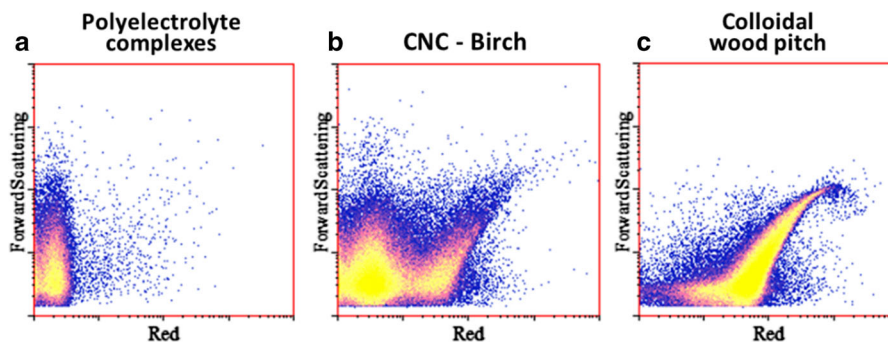
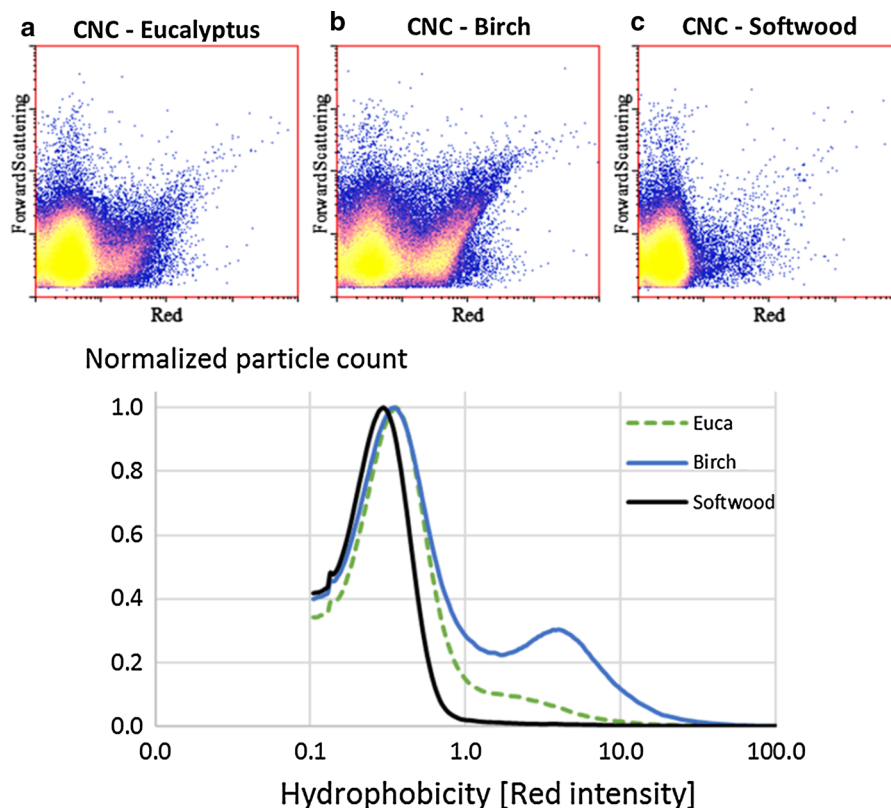


Fig. 3 Logarithmic density plots of fluorescence intensity in the red spectrum (red) versus the light scattering in the forward direction (FSC) of **a** polyelectrolyte complexes consisting of

cationic starch and carboxymethyl cellulose, **b** CNCs made from birch kraft pulp, and **c** colloidal wood pitch

mixture of hydrophilic and hydrophobic components. The interactions between various hydrophilic filler particles and hydrophobic colloidal wood pitch has previously been studied in model systems by FCM analyses (Strand et al. 2013). It was shown that hydrophilic and hydrophobic populations in fact interacted with each other, and that they formed hybrid populations with intermediate hydrophobicity

values. It was also shown that the interactions were slightly diminished by steric stabilization when water-soluble hemicelluloses (galactoglucomannans) were introduced as a third component to the system. In the current study, combining the two hydrophobicity values of the sub-populations resulted in an average value of 1.91 for the birch kraft CNCs. Because of these FCM analyses of the CNCs, it was theorized that

the kraft pulps most likely contained lipophilic extractives that had survived the harsh acidic conditions of CNC production. Extraction of the three kraft pulps with an appropriate solvent was required in order to confirm this theory.

The three kraft pulps were extracted with a mixture of acetone, water, and acetic acid. The content of lipophilic wood pitch components in extracts were analyzed according to standard laboratory procedure (Örså and Holmbom 1994). It was seen that all of the kraft pulps contained lipophilic components to some extent (Table 3). The three pulps did not contain noticeable amounts of triglycerides or steryl esters, since these components had been hydrolyzed into fatty acids and sterols by the strong alkaline conditions during the kraft cook (Back 2000). The dominating components in the eucalyptus and birch kraft pulp were fatty acids and sterols, as expected (Ekman and Holmbom 2000). It is known that the water-solubilities of long-chained fatty acids are very limited even at alkaline pH, and can be severely decreased at high conductivity values (Sundberg et al. 2009; MacNeil et al. 2011). This fact makes it very difficult to completely remove fatty acids by alkaline washing, even after kraft pulping. Traces of resin acids were also noticed in the hardwood pulps, which may have been added to aid deresination during washing at the pulp mills. The dominating components in the softwood kraft pulp were fatty acids and resin acids (Table 3). The detectable content of lipophilic extractives in the three kraft pulps were quite low overall, only from 48 to 188 µg/g o.d. pulp. Still, these amounts were significant enough to be detectable by FCM analyses of the final CNCs. It is known that lipophilic extractives are not degraded by acidic conditions, which has previously been seen in analyses of extractives throughout an acidic sulfite pulping line (Sithole et al. 2010a, b). This meant that the fatty acids, resin acids, and sterols observed in the kraft pulps were able to withstand the harsh acidic

hydrolysis step of CNC production, and remained with the CNCs through the rest of the production steps.

When reexamining the visible hydrophobic particle populations in Fig. 2, it was clear that the highest content of hydrophobic particles was seen in the CNCs made from birch kraft pulp. There were significantly less hydrophobic particles in the eucalyptus CNC, and only a very low amount in the softwood CNC. It was expected that the content of lipophilic particles in the kraft pulps would correlate directly with the observed hydrophobicity of the CNC. However, eucalyptus kraft pulp had the highest content of lipophilic components, while birch kraft pulp contained slightly less (Table 3). In order to understand this, the hydrophobicity of the different groups of extractives need to be taken into account. The pH of the CNC suspensions after dialysis was roughly 5.5. It is known that a fraction of the fatty acids may have been deprotonated, formed soaps, and have been dissolved into the aqueous phase even at this moderate pH (Ström 2000; Sundberg et al. 2009). However, the large and bulky carbon skeletons of sterols, and the lack of carboxylic acid groups, indicate that these are very hydrophobic compounds (Sjöström 1981; Ekman and Holmbom 2000; Nisula 2018). Sterols have also been shown to be quite troublesome in deresination of sulfite pulp, unlike resin and fatty acids (Sithole et al. 2010a). When taking the surface-active nature, and pH-dependent water-solubility of fatty acids into account, it is clear that fatty acids need to be considered significantly less hydrophobic than sterols, at least at pH values higher than 3. The sterols most likely influenced the particle hydrophobicity to a higher extent than fatty acids. A more satisfactory correlation was found between the hydrophobic populations in the CNCs and the sterol content of the three different kraft pulps. The least hydrophobic particles were produced from the raw material that contained the lowest amount of lipophilic components, i.e. the softwood kraft pulp. Some of the birch kraft pulp was

Table 3 Quantified amounts of extractives found in the acetone:water:acetic acid extracts of the different kraft pulps. The amounts are expressed as µg per o.d. g of pulp (uncertainty ± 5%)

Kraft pulp	Fatty acids and fatty alcohols (µg/g)	Resin acids (µg/g)	Sterols (µg/g)	Other* (µg/g)	Lipophilics (µg/g)
Eucalyptus	134	8	46	22	188
Birch	79	1	56	50	136
Softwood	38	10	0	26	48

*Other** various identified degradation products. *Lipophilics* the sum of fatty acids, fatty alcohols, resin acids, and sterols

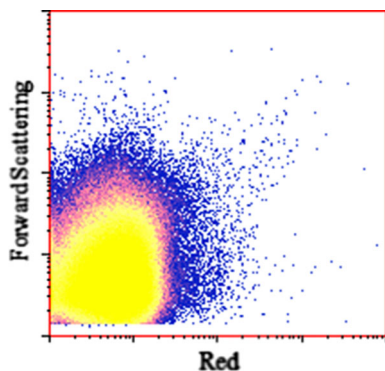


Fig. 4 A logarithmic density plot of fluorescence intensity in the red spectrum (red) versus the light scattering in the forward direction (FSC) of CNC made from pre-extracted birch kraft pulp

ASE-extracted with acetone:water:acetic acid (94:5:1 v/v) prior to CNC production. After pre-extraction of the birch kraft pulp, no separate hydrophobic population was seen in the CNCs, which indicated that the hydrophobic particles most likely originated from lipophilic extractives in the starting material (Fig. 4).

These results indicate that the extractives content of different raw materials for CNC production needs to be determined and taken into account. Even low quantities of lipophilic extractives will alter the properties of CNC surfaces significantly, and lead to misinterpretation of data. The raw material containing the lowest amount of lipophilic components, especially sterols, is recommended for CNC production, unless a pre-extraction of is performed to remove these components.

Conclusions

Cellulose nanocrystals (CNCs) were prepared from kraft pulps of eucalyptus, birch, and softwood. The different kraft pulps were hydrolyzed using strong sulfuric acid in order to obtain colloiddally stable CNCs. The CNCs were studied using flow cytometry (FCM). The light scattering properties of the CNCs in side direction and forward direction were documented, as well as the hydrophobicity of the CNCs.

Polysaccharide surfaces, such as cellulose, are known to be very hydrophilic in aqueous media. However, the presence of hydrophobic particles were seen clearly in the CNCs from the eucalyptus and birch

kraft pulps; i.e. the CNCs consisted of a hydrophilic and a hydrophobic particle population. It was shown that the hydrophilic particles in the CNCs had a similar hydrophobicity value as polyelectrolyte complexes consisting of pure hydrated polysaccharide chains. It was also shown that the hydrophobic particles in the CNC had a similar hydrophobicity value as colloidal wood pitch droplets. It was determined that the increased hydrophobicity of the CNCs was an effect of lipophilic extractives, especially sterols, present in the kraft pulps. These lipophilic components were able to withstand the harsh acidic hydrolysis step of CNC production, and remained with the CNCs through the rest of the production steps.

The use of a selective staining agent in combination with FCM analysis enabled detection of the hydrophobic particle populations within the CNC suspensions, even though the concentrations of lipophilic extractives in the raw materials were quite low. The difference in particle hydrophobicity was not detected from light scattering alone and would go completely undetected without the use of FCM. Furthermore, the FCM technique enables the user to gate certain particle populations and plot/calculate particle populations separate from each other. These facts indicate that FCM is a useful and powerful analysis technique also for CNCs. It should also be concluded that the content of lipophilic extractives in different raw materials need to be determined and taken into account prior to CNC production, if no pre-extraction step is employed.

Acknowledgments Open access funding provided by Åbo Akademi University (ABO). This work is a part of the project ExtBioNet, appointed by the Academy of Finland, and part of the activities of the Process Chemistry Centre (PCC) at Åbo Akademi University, Turku, Finland. Special thanks to Ph.D. student Weihua Zhang and technology student Richard Sundberg at the Laboratory of Wood and paper Chemistry, Åbo Akademi University.

Open Access This article is distributed under the terms of the Creative Commons Attribution 4.0 International License (<http://creativecommons.org/licenses/by/4.0/>), which permits unrestricted use, distribution, and reproduction in any medium, provided you give appropriate credit to the original author(s) and the source, provide a link to the Creative Commons license, and indicate if changes were made.

Appendix

See Fig. 5.

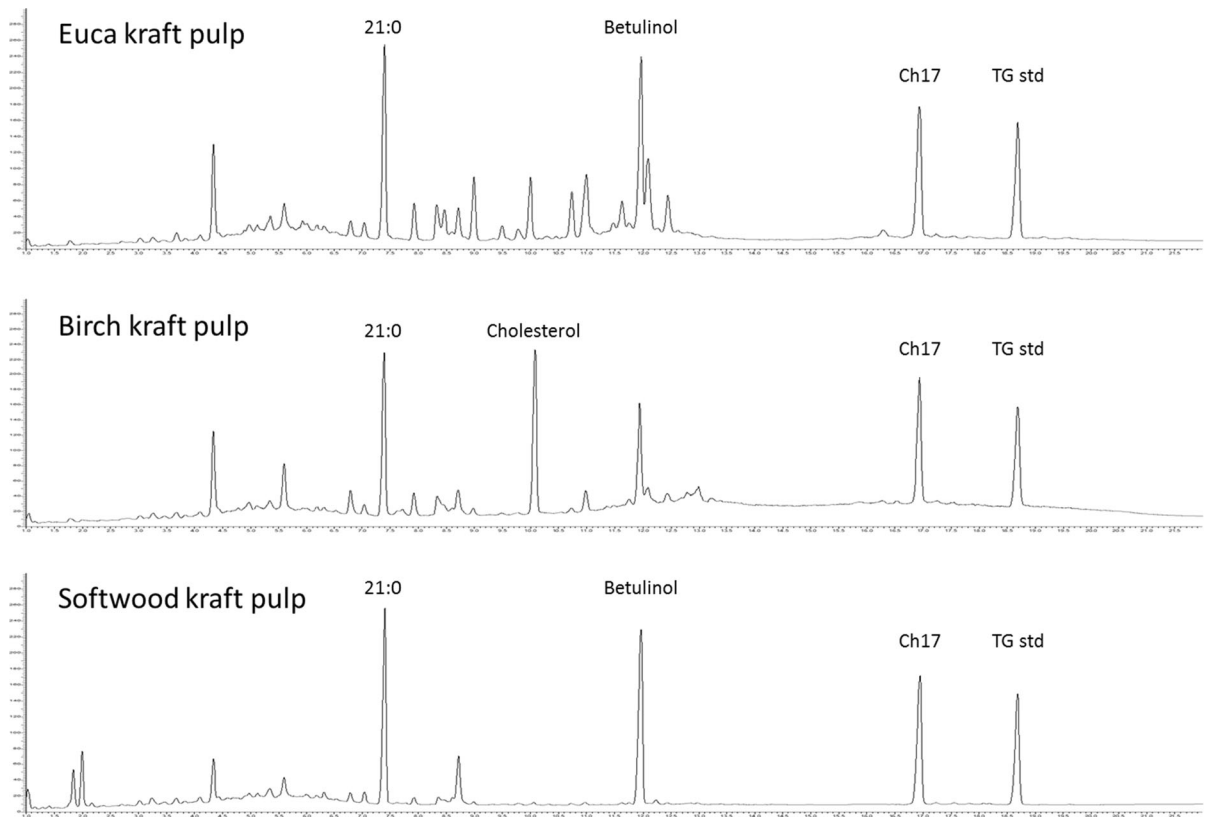


Fig. 5 Short column GC chromatograms of the silylated extracts from the three different kraft pulps. The four internal standards used are marked in the chromatograms

References

- Araki J, Wada M, Kuga S, Okano T (1999) Influence of surface charge on viscosity behavior of cellulose microcrystal suspension. *J Wood Sci* 45:258–261. <https://doi.org/10.1007/BF01177736>
- Back E (2000) Deresination in pulping and washing. In: Back E, Allen L (eds) *Pitch control, wood resin and deresination*. Tappi Press, Atlanta, pp 205–230
- Battista O (1950) Hydrolysis and crystallization of cellulose. *Ind Eng Chem* 42:502–507. <https://doi.org/10.1021/ie50483a029>
- Beck-Candanedo S, Roman M, Gray D (2005) Effect of reaction conditions on the properties and behavior of wood cellulose nanocrystal suspensions. *Biomacromol* 6:1048–1054. <https://doi.org/10.1021/bm049300p>
- Bondeson D, Mathew A, Oksman K (2006) Optimization of the isolation of nanocrystals from microcrystalline cellulose by acid hydrolysis. *Cellulose* 13:171–180. <https://doi.org/10.1007/s10570-006-9061-4>
- Chen L, Wang Q, Hirth K, Baez C, Agarwal U, Zhu J (2015) Tailoring the yield and characteristics of wood cellulose nanocrystals (CNC) using concentrated acid hydrolysis. *Cellulose* 22:1753–1762. <https://doi.org/10.1007/s10570-015-0615-1>
- Dong X, Revol J-F, Gray D (1998) Effect of microcrystallite preparation conditions on the formation of colloid crystals of cellulose. *Cellulose* 5:19–32. <https://doi.org/10.1023/A:1009260511939>
- Ekman R, Holmbom B (2000) The chemistry of wood resin. In: Back E, Allen L (eds) *Pitch control, wood resin and deresination*. Tappi Press, Atlanta, pp 37–76
- Favier V, Canova G, Cavaillé J, Chanzy H, Dufresne A, Gauthier C (1995a) Nanocomposite materials from latex and cellulose whiskers. *Polym Adv Technol* 6:351–355. <https://doi.org/10.1002/pat.1995.220060514>
- Favier V, Chanzy H, Cavaillé J (1995b) Polymer nanocomposites reinforced by cellulose whiskers. *Macromolecules* 28:6365–6367. <https://doi.org/10.1021/ma00122a053>
- Greenspan P, Fowler S (1985) Spectrofluorometric studies of the lipid probe, Nile red. *J Lipid Res* 26:781–789
- Hääriä M, Konn J, Vähäsalo L, Sundberg A, Willför S (2014) Flow cytometry as a tool to assess inhibitor performance for calcium oxalate scale control. *Nord Pulp Paper Res J* 29:663–672. <https://doi.org/10.3183/NPPRJ-2014-29-04-p663-672>
- Habibi Y, Lucia L, Rojas O (2010) Cellulose nanocrystals: chemistry, self-assembly, and applications. *Chem Rev* 110:3479–3500. <https://doi.org/10.1021/cr900339w>
- Håkansson H, Ahlgren P (2005) Acid hydrolysis of some industrial pulps: effect of hydrolysis conditions and raw

- material. *Cellulose* 12:177–183. <https://doi.org/10.1007/s10570-004-1038-6>
- Hirai A, Inui O, Horii F, Tsuji M (2009) Phase separation behavior in aqueous suspensions of bacterial cellulose nanocrystals prepared by sulfuric acid treatment. *Langmuir* 25:497–502. <https://doi.org/10.1021/la802947m>
- Jose J, Burgess K (2006) Syntheses and properties of water-soluble Nile red derivatives. *J Org Chem* 71:7835–7839. <https://doi.org/10.1021/jo061369v>
- Lindberg L, Vähäsalo L, Holmbom B (2004) Flow cytometry of bacteria and wood resin particles in paper production. *Nord Pulp Paper Res J* 19:412–416. <https://doi.org/10.3183/NPPRJ-2004-19-04-p412-416>
- MacNeil D, Sundberg A, Vähäsalo L, Holmbom B (2011) Effect of calcium on the phase distribution of resin and fatty acids in pitch emulsions. *J Dispers Sci Technol* 32:269–276. <https://doi.org/10.1080/01932691003659270>
- Marchessault R, Morehead F, Koch M (1961) Some hydrodynamic properties of neutral suspensions of cellulose crystallites as related to size and shape. *J Colloid Sci* 16:327–344. [https://doi.org/10.1016/0095-8522\(61\)90033-2](https://doi.org/10.1016/0095-8522(61)90033-2)
- Nisula L (2018) Wood extractives in conifers. Ph.D. thesis, Åbo Akademi University, Åbo Akademi University Press, Turku, Finland
- Örså F, Holmbom B (1994) A convenient method for the determination of wood extractives in papermaking process waters and effluents. *J Pulp Paper Sci* 20:J361–J366
- Qin M, Hannuksela T, Holmbom B (2003) Physicochemical characterisation of TMP resin and related model mixtures. *Colloids Surf A* 221:243–254. [https://doi.org/10.1016/S0927-7757\(03\)00146-8](https://doi.org/10.1016/S0927-7757(03)00146-8)
- Revol J-F, Bradford H, Giasson J, Marchessault R, Gray D (1992) Helicoidal self-ordering of cellulose microfibrils in aqueous suspension. *Int J Biol Macromol* 14:170–172. [https://doi.org/10.1016/S0141-8130\(05\)80008-X](https://doi.org/10.1016/S0141-8130(05)80008-X)
- Revol J-F, Godbout L, Dong X-M, Gray D, Chanzy H, Maret G (1994) Chiral nematic suspensions of cellulose crystallites; phase separation and magnetic field orientation. *Liq Cryst* 16:127–134. <https://doi.org/10.1080/02678299408036525>
- Ruiz M, Cavallé J, Dufresne A, Gérard J, Graillat C (2000) Processing and characterization of new thermoset nanocomposites based on cellulose whiskers. *Compos Interfaces* 7:117–131. <https://doi.org/10.1163/156855400300184271>
- Shapiro H (2003) *Practical flow cytometry*, 4th edn. Wiley, Hoboken
- Sithole B, Shirin S, Ambayec B (2010a) Analysis and fate of lipophilic extractives in sulphite pulps. *J Wood Chem Technol* 30:31–47. <https://doi.org/10.1080/02773810903370404>
- Sithole B, Shirin S, Zhang X, Lapierre L, Pimentel J, Paice M (2010b) Deresination options in sulphite pulping. *BioResources* 5:187–205
- Sjöström E (1981) In: Sjöström E (ed) *Wood chemistry - fundamentals and application*. Academic Press inc., New York
- Strand A, Sundberg A, Vähäsalo L, Holmbom B (2011) Influence of pitch composition and wood substances on the phase distribution of resin and fatty acids at different pH levels. *J Dispers Sci Technol* 32:702–709. <https://doi.org/10.1080/01932691.2010.480853>
- Strand A, Lindqvist H, Vähäsalo L, Blomquist M, Sundberg A (2013) Analysis of interactions between colloidal wood pitch and various mineral particles by flow cytometry. *BioResources* 8:3884–3900. <https://doi.org/10.15376/biores.8.3.3884-3900>
- Strand A, Vähäsalo L, Ketola A, Salminen K, Retulainen E, Sundberg A (2018) In-situ analysis of polyelectrolyte complexes by flow cytometry. *Cellulose* 25:3781–3795. <https://doi.org/10.1007/s10570-018-1832-1>
- Ström G (2000) Physico-chemical properties and surfactant behavior. In: Back E, Allen L (eds) *Pitch control, wood resin and deresination*. Tappi Press, Atlanta, pp 139–149
- Sundberg A, Sundberg K, Lilland C, Holmbom B (1996a) Determination of hemicelluloses and pectins in wood and pulp fibres by acid methanolysis and gas chromatography. *Nord Pulp Paper Res J* 11(216–219):226. <https://doi.org/10.3183/NPPRJ-1996-11-04-p216-219>
- Sundberg K, Pettersson C, Eckerman C, Holmbom B (1996b) Preparation and properties of a model dispersion of colloidal wood resin from Norway spruce. *J Pulp Paper Sci* 22:J248–J252
- Sundberg A, Strand A, Vähäsalo L, Holmbom B (2009) Phase distribution of resin and fatty acids in colloidal wood pitch emulsions at different pH-levels. *J Dispers Sci Technol* 30:912–919. <https://doi.org/10.1080/01932690802646249>
- Vähäsalo L, Holmbom B (2005) Factors affecting white pitch deposition. *Nord Pulp Paper Res J* 20:164–168. <https://doi.org/10.3183/NPPRJ-2005-20-02-p164-168>
- Vähäsalo L, Degerth R, Holmbom B (2003) The use of flow cytometry in wet end research. *Paper Technol* 44:45–49
- Wang Q, Zhu J, Reiner R, Verrill S, Baxa U, McNeil S (2012) Approaching zero cellulose loss in cellulose nanocrystal (CNC) production: recovery and characterization of cellulosic solid residues (CSR) and CNC. *Cellulose* 19:2033–2047. <https://doi.org/10.1007/s10570-012-9765-6>
- Wang Q, Zhao X, Zhu J (2014) Kinetics of strong acid hydrolysis of a bleached kraft pulp for producing cellulose nanocrystals (CNCs). *Ind Eng Chem Res* 53:11007–11014. <https://doi.org/10.1021/ie501672m>